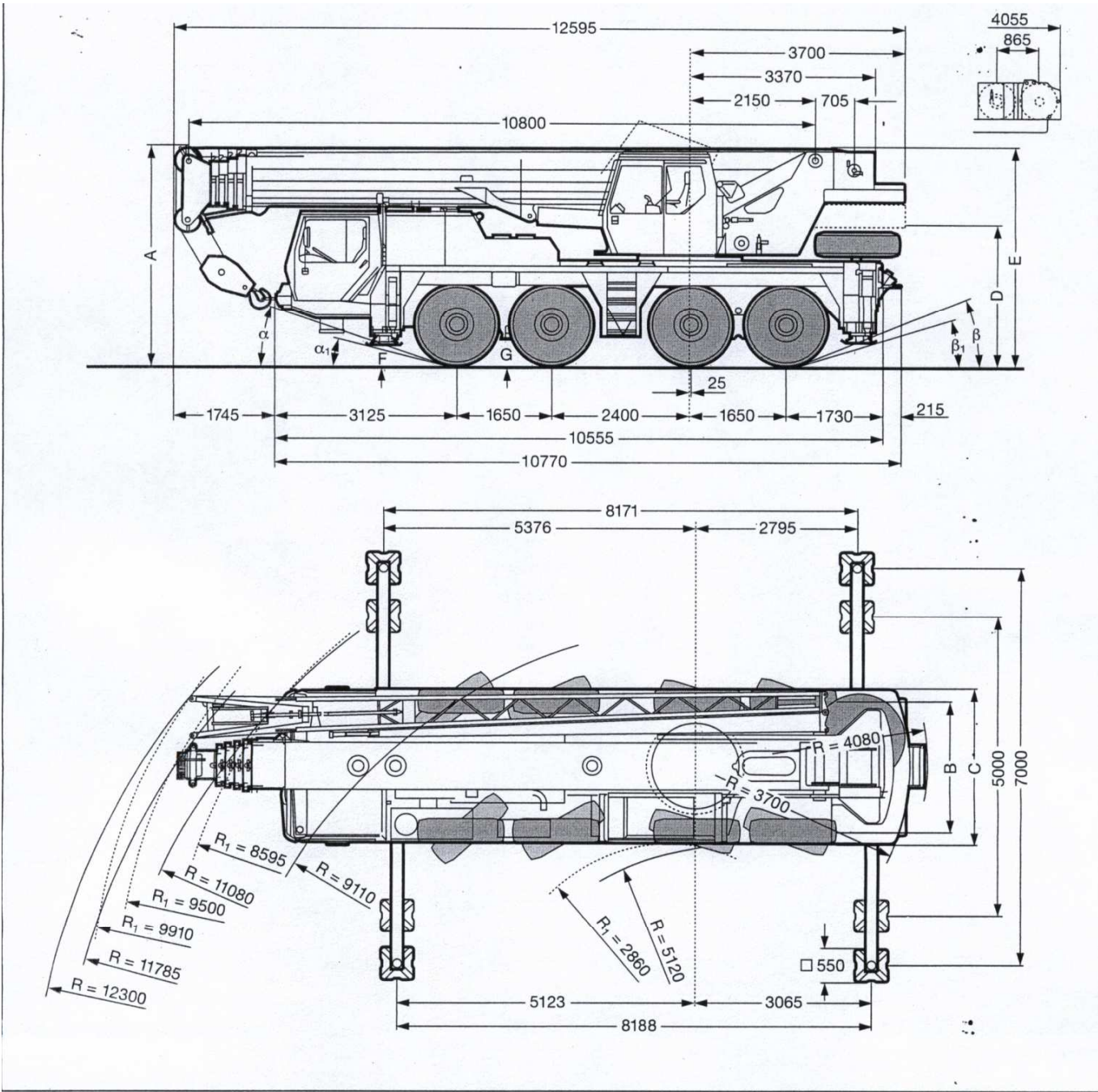


MAKE	LIEBHERR	WEIGHT	80T
MODEL	LTM 1080/1	TYPE	ALL TERRAIN CRANE



16.00 R 25	Dimensions mm											
	A	A 100 mm*	B	C	D	E	F	G	$\alpha$	$\alpha_1$	$\beta$	$\beta_1$
	3850	3750	2310	2750	2406	3866	345	430	19°	16°	23°	16°

\* lowered      \*\* with folding jib

HOOK BLOCK	WEIGHT
58 T BLOCK	330 KG
38 T BLOCK	400 KG
16 T BLOCK	235 KG
5.7 T BLOCK	110 KG

MAKE	LIEBHERR	WEIGHT	80T
MODEL	LTM 1080/1	TYPE	ALL TERRAIN CRANE

MAIN BOOM DUTIES 16 T BALLAST 360° DIN ISO													
BOOM LENGTH IN METRES													
RADIUS METRES	10.8 OVER REAR	10.80	14.20	17.60	21.10	24.50	27.90	31.30	34.80	38.20	41.60	45.00	48.00
2.50	80.00												
3.00	71.00	62.00	62.00	57.00									
3.50	63.00	56.00	56.00	53.00	46.00								
4.00	57.00	52.00	52.00	49.50	44.00								
4.50	52.00	47.50	47.50	46.00	42.00	35.00							
5.00	47.00	44.00	44.00	43.00	40.00	33.50	27.90						
6.00	39.00	38.00	37.50	37.50	37.00	36.50	30.50	26.10	22.60				
7.00	33.50	33.00	32.50	32.50	32.00	28.00	24.50	21.20	18.20				
8.00	28.90	28.50	28.30	27.70	27.50	25.60	22.90	19.90	17.30	15.00	12.80		
9.00			24.60	24.10	23.80	22.90	21.00	18.70	16.50	14.30	12.30	10.80	8.70
10.00			21.60	21.10	20.60	19.90	19.50	17.50	15.80	13.70	11.80	10.50	8.40
12.00			16.10	15.70	15.50	15.50	15.30	15.20	13.80	12.40	10.90	9.60	7.70
14.00				12.10	12.00	12.10	12.20	12.30	12.10	11.10	9.80	8.60	7.20
16.00					9.40	9.60	9.90	10.10	10.00	10.00	8.80	7.80	6.50
18.00					7.60	7.90	8.00	8.30	8.30	8.50	8.00	7.10	6.00
20.00						7.10	6.50	6.90	7.00	7.20	7.20	6.50	5.50
22.00						6.30	5.60	6.30	5.80	6.10	6.20	5.90	5.10
24.00							5.00	5.60	5.20	5.00	5.20	5.40	4.70
26.00								4.90	4.80	4.50	4.80	4.50	4.40
28.00								4.20	4.40	4.10	4.30	3.90	3.90
30.00									4.10	3.80	3.70	3.40	3.40
32.00									3.70	3.50	3.30	3.00	2.90
34.00										3.10	2.90	2.60	2.50
36.00											2.60	2.30	2.20
38.00											2.30	2.00	1.90
40.00												1.70	1.70
42.00												1.40	1.40
44.00													
LIFT CAPACITY IN TONS													

THE WEIGHTS OF THE HOOK BLOCK, SLINGS AND ANY LIFTING ATTACHMENTS MUST BE ADDED TO THE WEIGHT TO BE LIFTED WHEN DETERMINING THE SUSPENDED LOAD